

A PROJECT BY :  
**SHIVAM**  
DEVELOPERS

**PUSHPAM HEIGHTS**  
Opp. Siddhi Elegant Flat, Opp. Khajuri Bus Stand,  
Lambha, Ahmedabad.

---

CONTACT : **93754 74848**



**PUSHPAM**  
HEIGHTS

2 & 3 BHK LIVING SPACE & SHOPS





# A LIFE FULL OF HAPPINESS !

Pushpam Heights brings forth an elegant, lifestyle project at a prime, convenient and a lush green location.

One look at the layout of the campus & you know the homes are spacious inside out. With just 3 towers, an overall sense of open space is a welcome change from the otherwise congested planning seen elsewhere.

Planned such that it offers an ideal living space to its residents, the well planned and airy 2 & 3 BHK Apartments with a premium look and feel area class apart.



**YOU WILL ADORE  
YOUR CHANCE TO  
LIVE IN THE HEAVEN**

There is a world where contemporary aesthetics  
blends perfectly with efficient functionality.



**HOMES THAT  
STAND OUT IN  
STYLE**

Where two magnificent towers  
stand together creating a vibrant gated community.

Where your homes are close to the sky but also near nature.



**YOU WILL ADORE  
YOUR CHANCE TO  
LIVE IN THE HEAVEN**

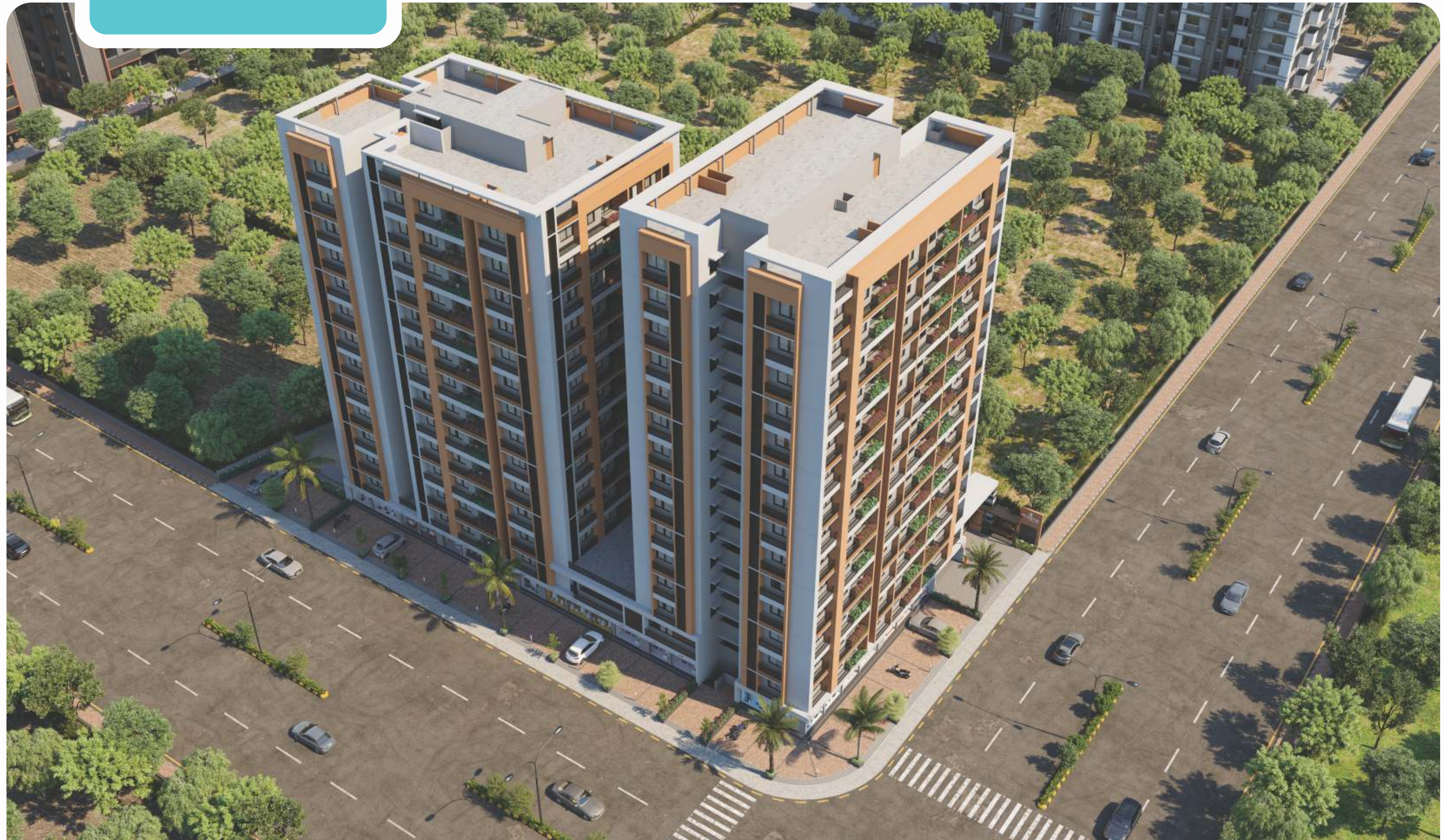
Where luck and fortune thrives in spades  
breathe in that heaven of freedom...



**HOMES THAT  
AMAZE  
YOU WITH MORE**

Where sleek architecture and modern textures vie for attention alongside lush landscapes.

Where every detail is thoughtfully added to foster spaces that delight, engage and pamper.



# GROUND FLOOR LAYOUT PLAN



SHOP-01 10'7" X 19'10"	SHOP-02 14'3" X 19'10"	SHOP-03 8'10" X 25'3"	SHOP-04 9'0" X 25'7"	SHOP-05 10'5" X 25'7"	SHOP-06 10'5" X 25'7"	SHOP-07 15'4" X 25'7"	SHOP-08 10'5" X 27'5"	SHOP-09 10'5" X 27'5"	SHOP-10 10'0" X 27'5"	SHOP-11 9'7" X 27'5"	SHOP-12 10'5" X 27'5"	SHOP-13 12'0" X 27'5"	SHOP-14 12'1" X 27'5"	SHOP-15 24'2" X 10'7"	SHOP-16 24'2" X 10'7"	SHOP-17 24'2" X 10'5"	SHOP-18 24'2" X 14'4"	SHOP-19 24'2" X 9'0"	SHOP-20 24'2" X 10'2"	SHOP-21 24'2" X 11'0"
---------------------------	---------------------------	--------------------------	-------------------------	--------------------------	--------------------------	--------------------------	--------------------------	--------------------------	--------------------------	-------------------------	--------------------------	--------------------------	--------------------------	--------------------------	--------------------------	--------------------------	--------------------------	-------------------------	--------------------------	--------------------------

# FIRST

FLOOR LAYOUT PLAN

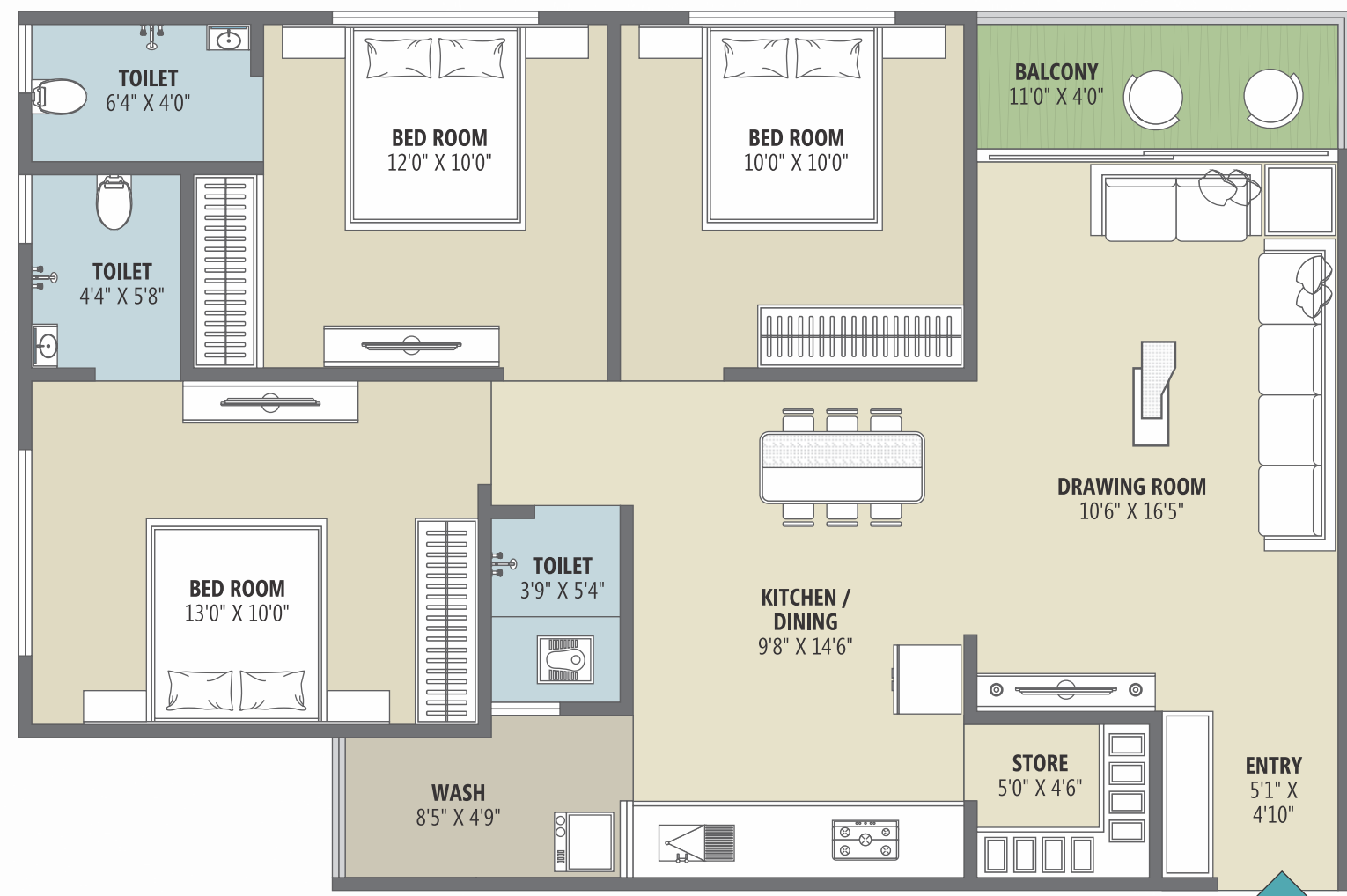
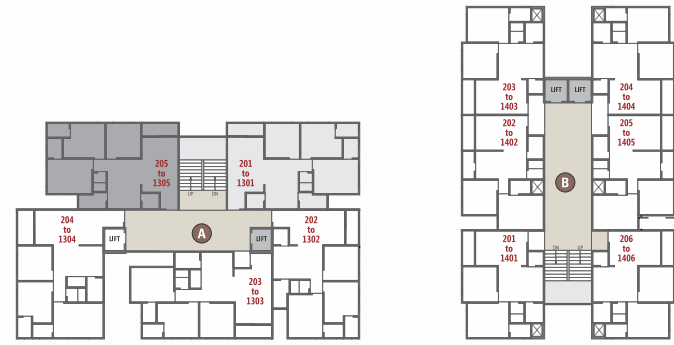


# TYPICAL FLOOR LAYOUT PLAN



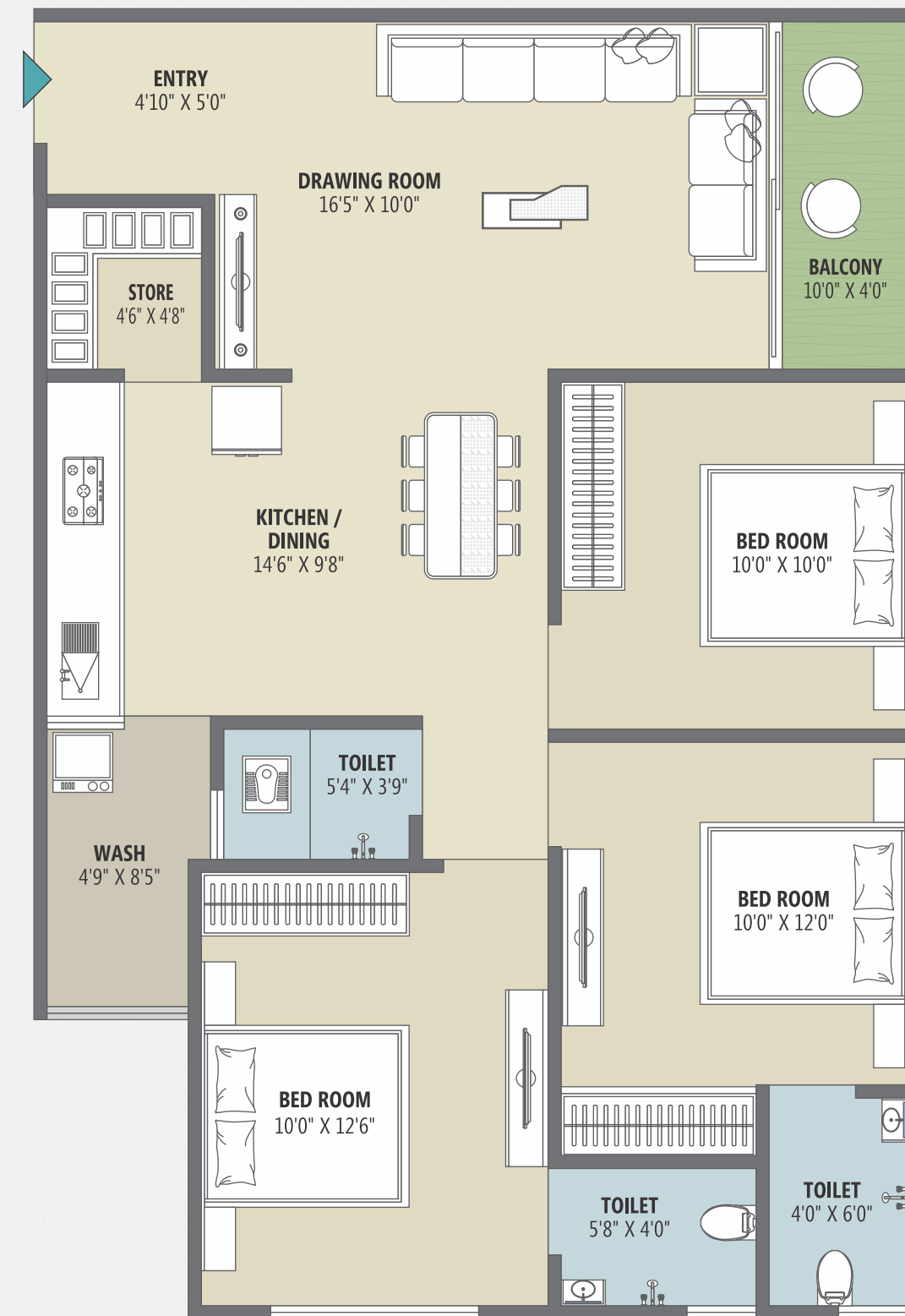
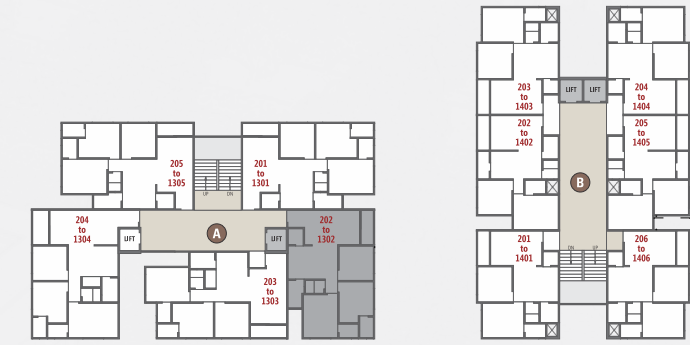
UNIT PLAN • BLOCK A

3 BHK • TYPE 1



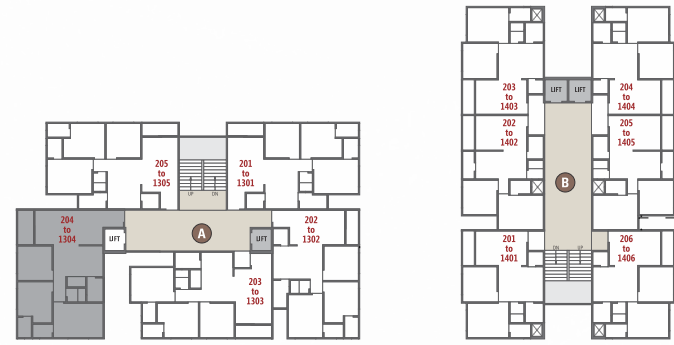
UNIT PLAN • BLOCK A

3 BHK • TYPE 2



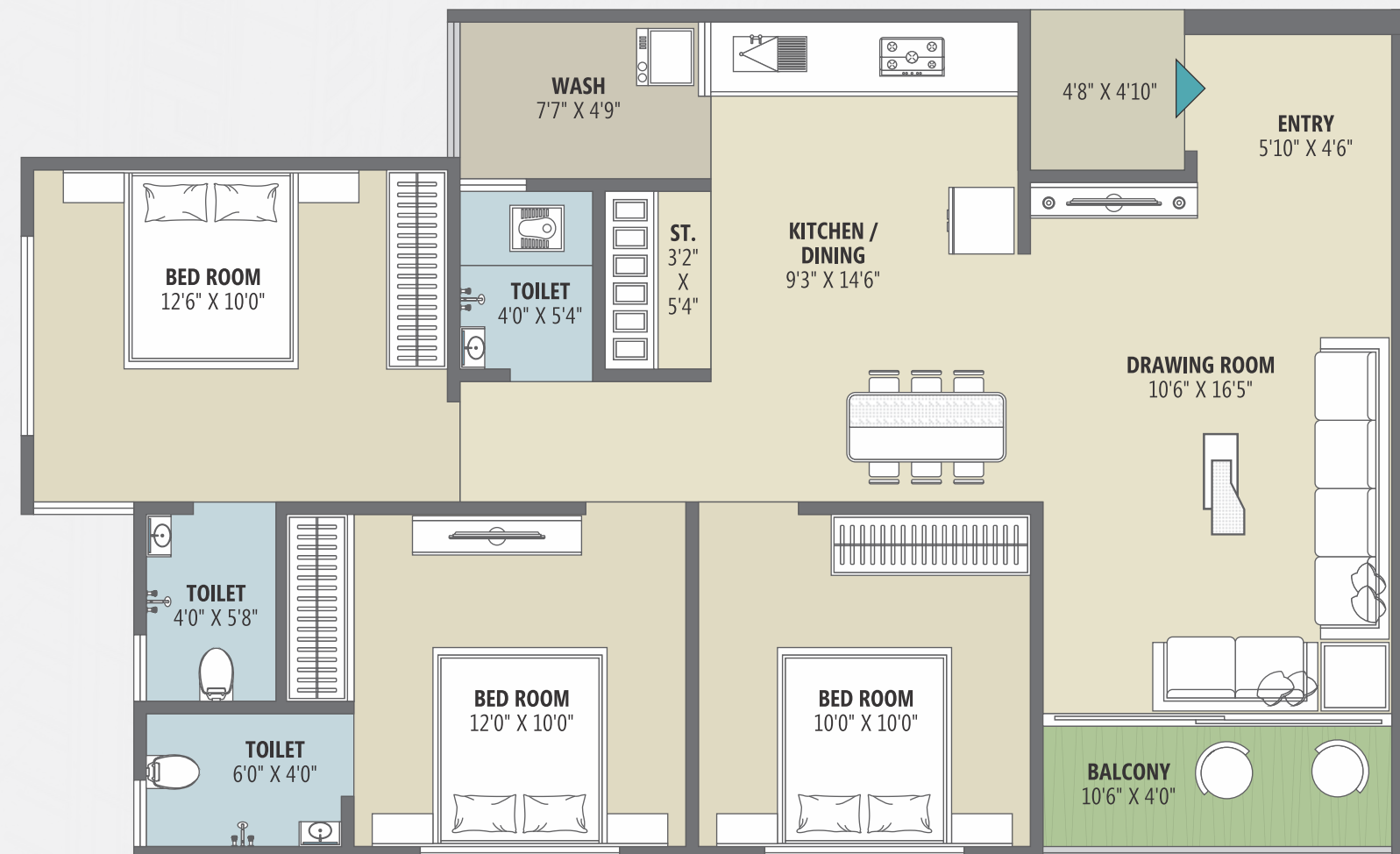
UNIT PLAN • BLOCK A

3 BHK • TYPE 3

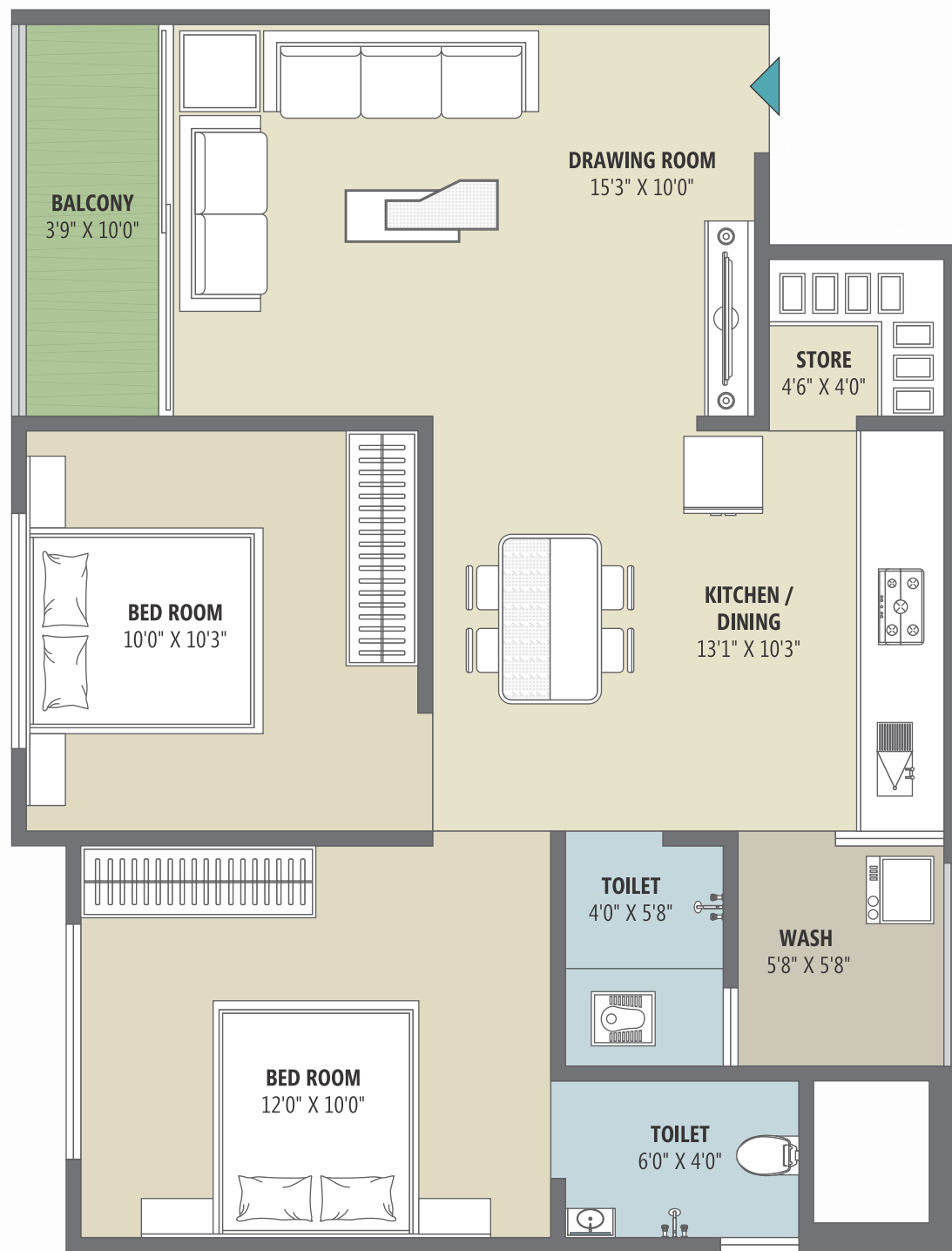
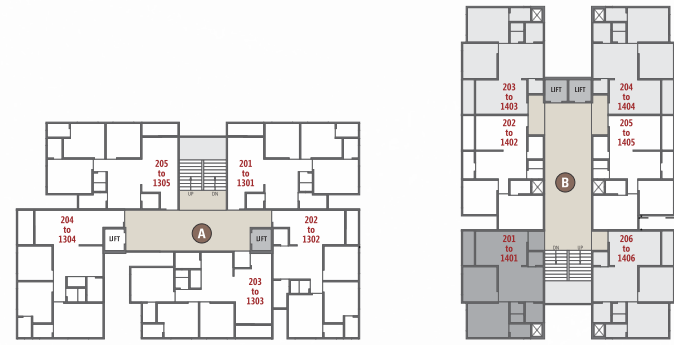


UNIT PLAN • BLOCK A

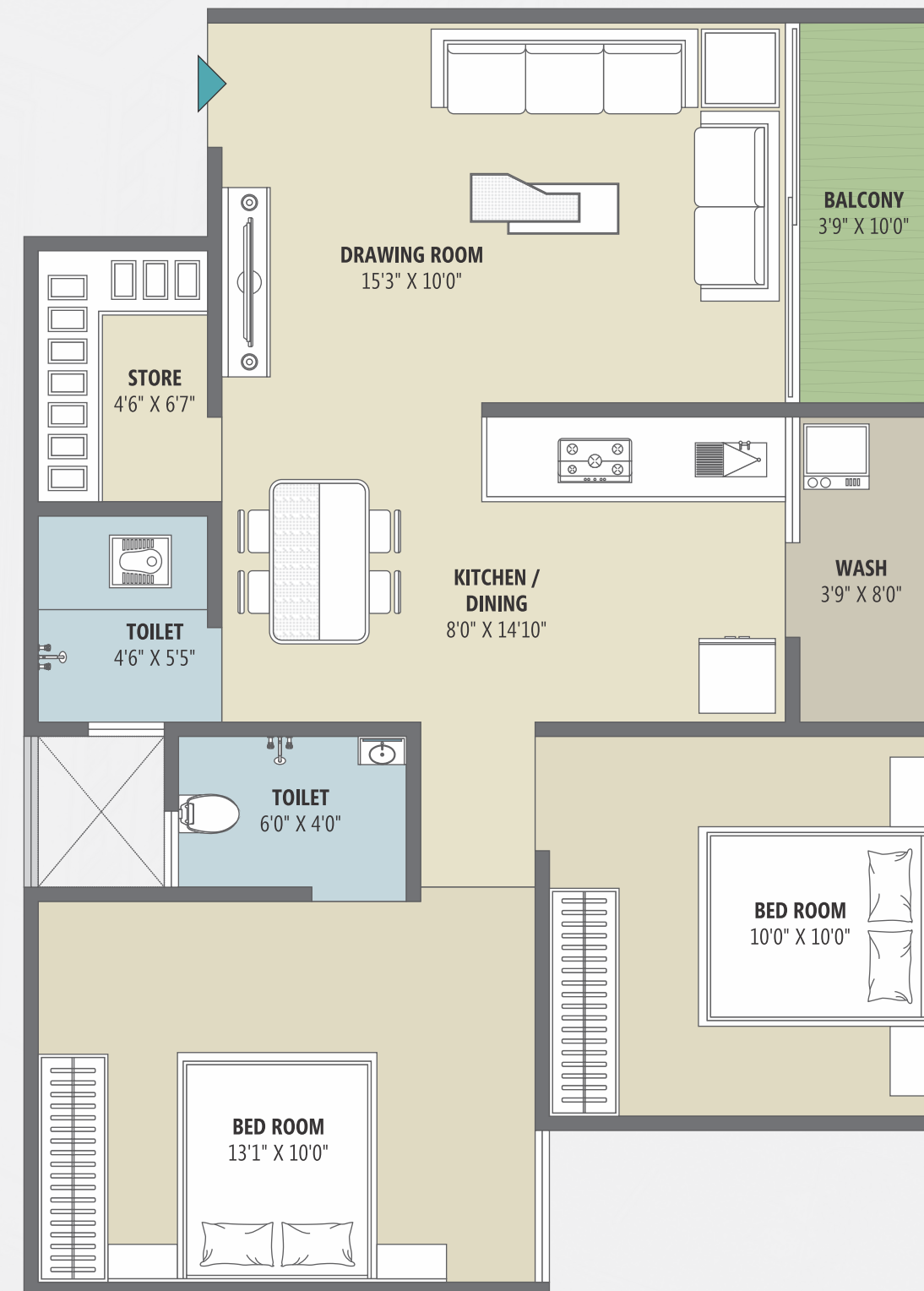
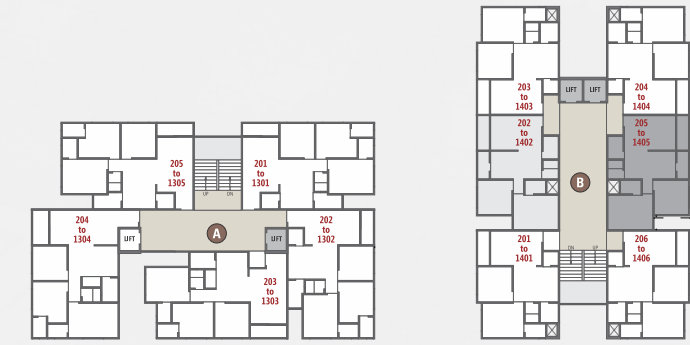
3 BHK • TYPE 4



UNIT PLAN • BLOCK B  
2 BHK • TYPE 5

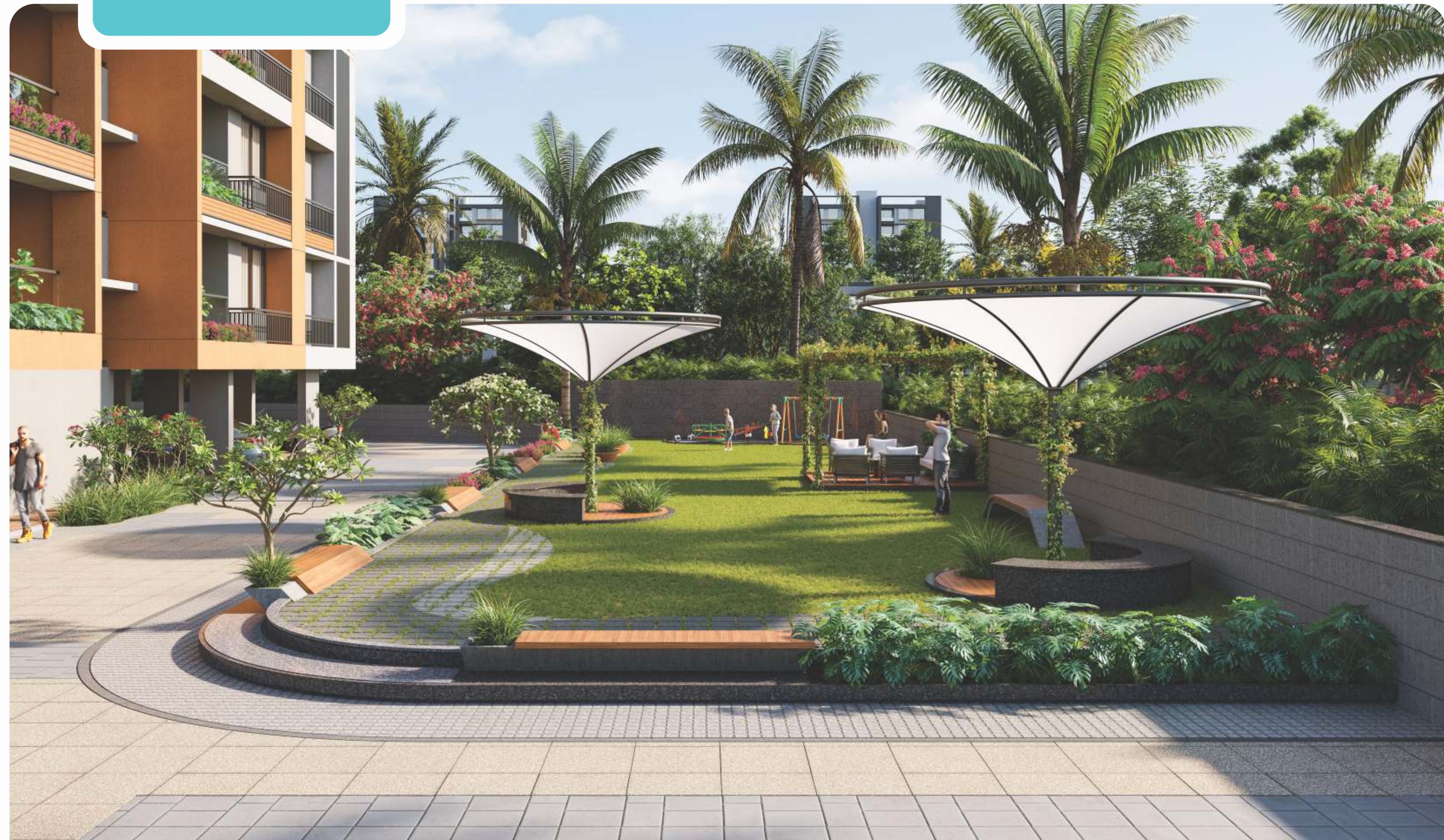


UNIT PLAN • BLOCK B  
2 BHK • TYPE 6



**HOMES THAT  
CARE FOR THE  
PLANET**

Living at Pushpam Heights grants you a privileged access to an exciting array of leisure and entertainment. Carefully curated to elevate your lifestyle you and your loved ones will always be in the middle of joyous moments and relaxing days.



**HOMES CLOSE  
TO THE CLOUDS  
AND THE GREENS**

**Wake up to stunning vistas**

Be it mesmerizing sunsets or the sight of verdant lawns, you will wake up to beautiful views every day in your garden - facing homes at Pushpam Heights.



GRAND ENTRANCE



SECURITY GATE



SECURITY AT GATE



CCVV CAMERA



MINI HOME THEATRE



CHILDREN PLAY AREA



SENIOR CITIZEN SEATING AREA



SOLAR ROOF TOP



FIRE SAFETY



BASEMENT PARKING



INDOOR GAME AREA



TODDLER PLAY AREA



2 LIFTS PER BLOCK



COMMUNITY HALL



SPECIOUS FOYER AREA



WELL EQUIPMENT GYM



CROSS VENTILATION



YOGA SPACE



GREEN ZONE



24 X 7 WATER SUPPLY

## HOMES AT THE CENTER OF IT ALL



SCAN FOR LOCATION



### FLOORING

Vitrified tiles for entire flooring in all apartments.



### STRUCTURE

Earth quake resistant R.C.C. frame structure as per new laws.



### WALL FINISH / ELEVATION

Internal mala plaster with finish putty, attractive external elevation with double coat sand faced plaster texture.



### KITCHEN

Mirror polished granite platform with S.S. sink, Designer glaze tiles up to lintel level.



### DOORS

Decorative main door & other flush doors.



### WINDOWS

All windows in alluminium section with granite frame, standard quality window glass.



### TOILET

Tiles on floor and walls up to lintel level. Sanitary & bath fittings.



### ELECTRIFICATION

ISI modular switches with concealed wiring and the adequate number of points



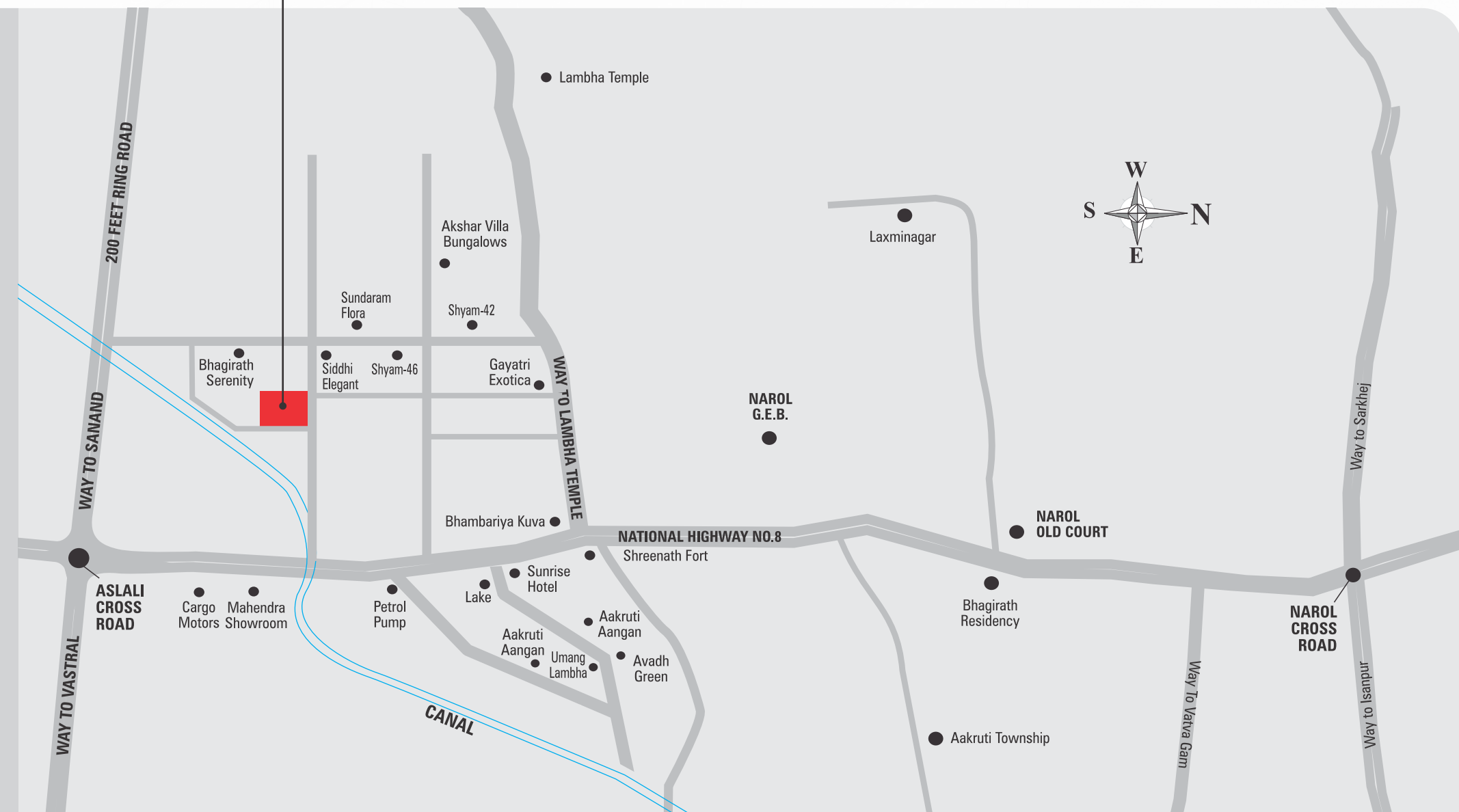
### PLUMBING

ISI CPVC/UPVC pipes for water supply, PVC & SWR pipes for solid waster and drainage systems. percolation recharge wells as per the norms branded CP Fittings.



### TERRACE

Brick-bat concrete with china mosaic for heat reflection with water proofing.



DEVELOPERS :  
**SHIVAM**  
DEVELOPERS

SITE ADDRESS :  
**PUSHPAM HEIGHTS**  
Opp. Siddhi Elegant Flat,  
Opp. Khajuri Bus Stand, Lambha,  
Ahmedabad.  
+91 93754 74848

ARCHITECT :  
**Z-AXIS**  
ARCHITECTS

STRUCTURER :  
**सर्प**  
Consultants

**NOTES :** • This brochure is not as legal part of document but only for easy understanding to customer • Irregular payment cause for cancellation of the booking  
• All rights are reserved by developers to make any changes in plan, scheme elevation, dimension and other details there in to comply with statutory regulation shall be binding to all the members • Subject to Ahmedabad Jurisdiction • Payments in favour of "SHIVAM DEVELOPERS"